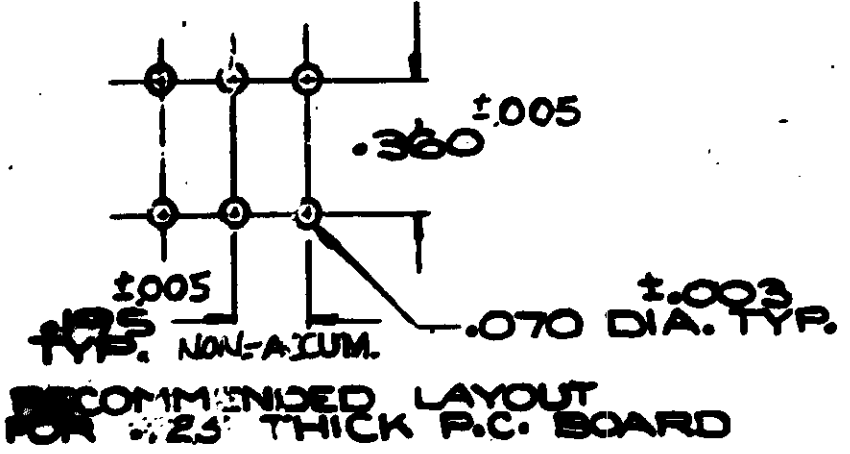
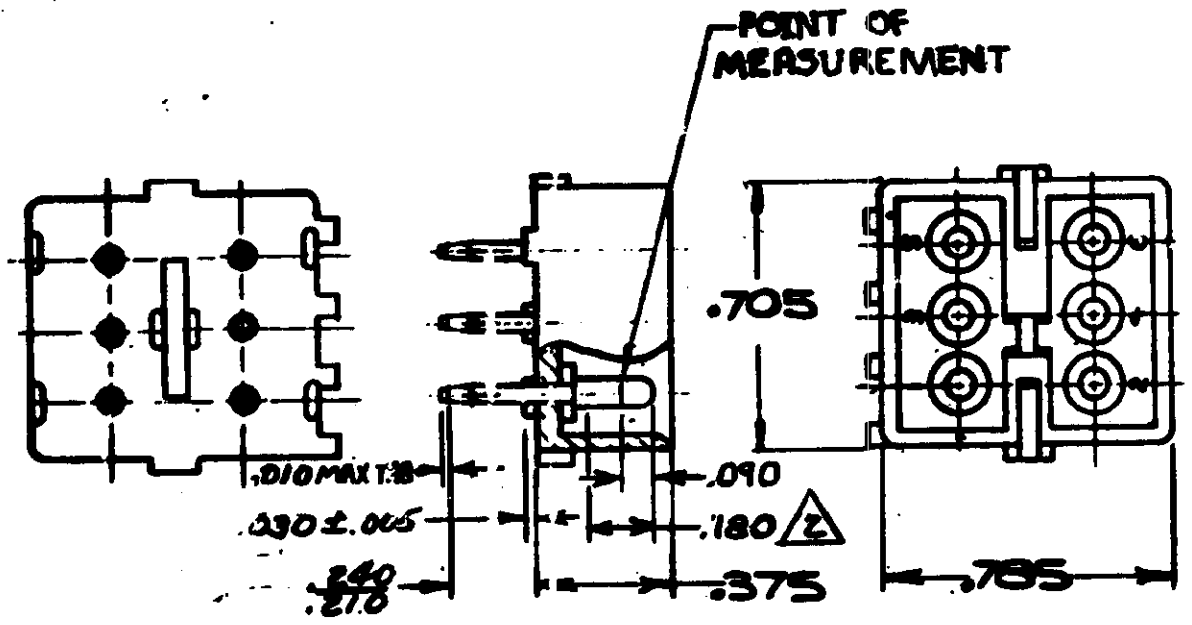


S

UNLESS OTHERWISE SPECIFIED, ALL DIMENSIONS ARE IN INCHES



1. PARTS COMPLY WITH AMP SOLDERABILITY SPEC. NO. 109-11-3
 CONTACT IS PLATED OVERALL WITH .000050 NICKEL, THEN .000030 GOLD OVER CONTACT LENGTH INDICATED AND MATTE TIN ON SOLDER TAIL END.

ASSEMBLY NO.	HSG. MATL. - COLOR	PIN MATL. FINISH
350425-2	NYLON NATURAL	COPPER ALLOY - GOLD
350425-1	NYLON - NATURAL	COPPER ALLOY PRE-TIN

K	OBsolete 1-1, 2-2, 2-2	KW RS	417 86
	3-1, 3-2, 4-1, 4-2, 5-2, 5-1		
	6-1, 6-2, 7-1, 7-2, 8-1, 8-2		
	9-1, 9-2 CM 473		

REV.	DESCRIPTION	BY	CHKD	DATE
RESTORED		RS		6/1/85
REV. PER M-7375		63	CP	8/2/85
REVISED M-6896		PAS	DH	8/1/85
APPLY NOTE 2, M-6694		WF	DH	11/2/85
REV. Tail Length M-4161		MS	WH	5/24/85
REVISED M-4161		MF	DH	3-7-77
ECN M-3871		PH	DH	7/10/76
ECN 3452		GV	SC	4/10/71
ECN M-3156		PL	SW	4/1/76
REDRAW ADDED COLORS		STZ	WJ	4/1/85
LTR	REVISION RECORD	DR	CNK	DATE

QTY	DESCRIPTION
1	350425

© 1978 BY AMP INCORPORATED. ALL RIGHTS RESERVED. AMP PRODUCTS COVERED BY PATENTS AND/OR PATENTS PENDING. 9. Eshman 6-27-73 P. O'Connor 6-28-73 J. H. ... 6-28-73 E. P. ... 6-28-73	CUSTOMER COPY REFERENCE ONLY AMP AMP INCORPORATED MATERIAL AND FINISH SEE TABLE WIRE - RANGE - INSULATION TYPE ... LTR CM B NO 350425 CIRCUIT MATE-N-LOK P.C. BOARD PIN HEADER
---	--